

EMSI



1187 Alturas Drive
Moscow, Idaho 83843
2088823567

Program Report



Economic Modeling Specialists, Inc. www.economicmodeling.com

EMSI

Region Info

Region: San Francisco larger MSA

County Areas: Alameda, California (6001), Contra Costa, California (6013), Marin, California (6041), San Francisco, California (6075), San Mateo, California (6081), Santa Clara, California (6085)

Executive Summary

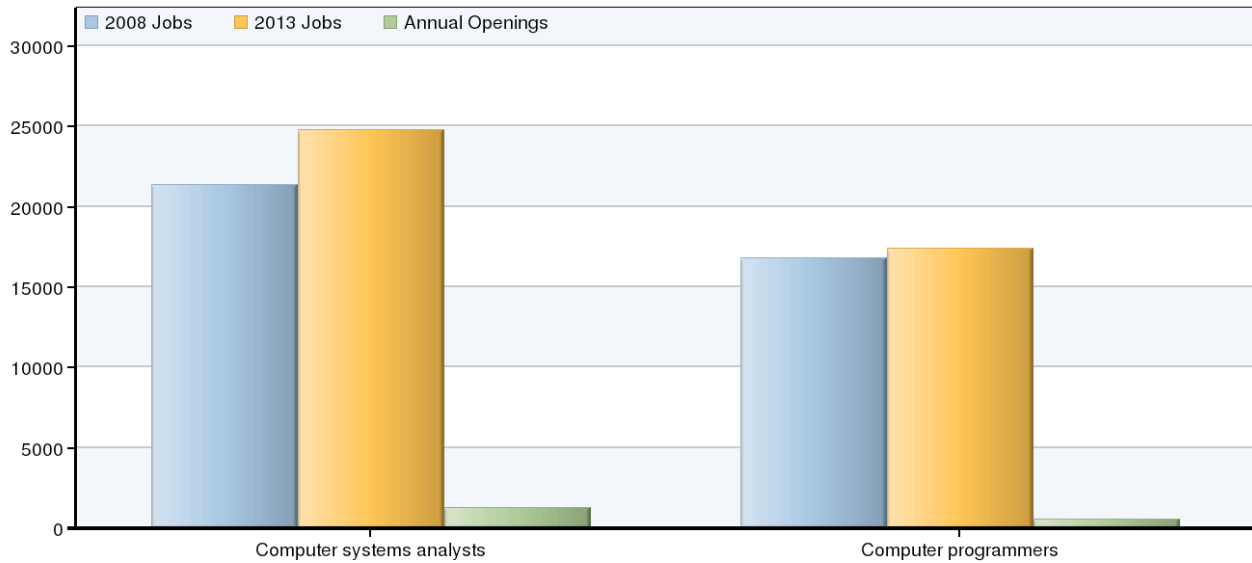
Program
World Wide Web Administration (TOP 0709.00)

Program Occupations
Computer programmers (SOC 15-1021)
Computer systems analysts (SOC 15-1051)

Summary	
2008 Occupational Jobs	38,156
2013 Occupational Jobs	42,155
Total Change	3,999
Total % Change	10%
2009 Median Hourly Earnings/Worker	\$37.41
Annual Openings	1,793
Total Replacement Jobs	4,967

Source: EMSI Complete Employment - Spring 2009

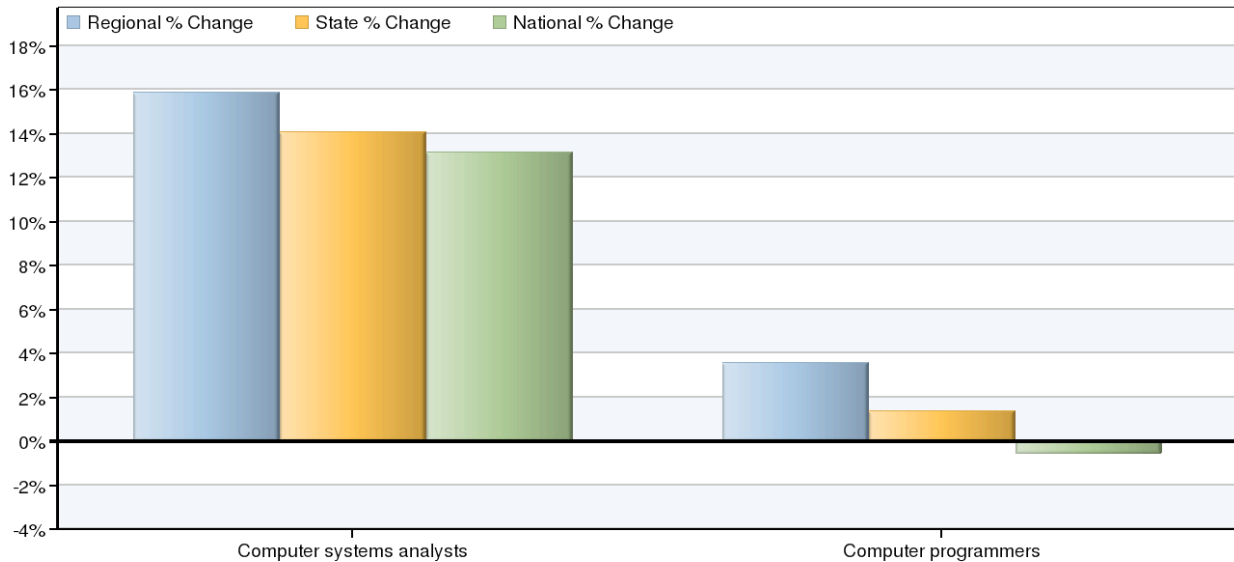
Occupational Breakdown



SOC Code	Description	2008 Jobs	2013 Jobs	Annual Openings	Replacement Jobs	Hourly Earnings	Education Level
15-1051	Computer systems analysts	21,376	24,774	1,255	2,875	\$38.27	Bachelor's degree
15-1021	Computer programmers	16,780	17,381	538	2,091	\$36.31	Bachelor's degree
	Total	38,156	42,155	1,793	4,967	\$37.41	

Source: EMSI Complete Employment - Spring 2009

Occupational Change



SOC Code	Description	Regional Change	Regional % Change	State % Change	National % Change
15-1051	Computer systems analysts	3,398	16%	14%	13%
15-1021	Computer programmers	601	4%	1%	-1%

Source: EMSI Complete Employment - Spring 2009

Occupation Distribution



County	2008 Jobs
Santa Clara, CA (6085)	14,817
Alameda, CA (6001)	7,374
San Francisco, CA (6075)	6,731
San Mateo, CA (6081)	5,204
Contra Costa, CA (6013)	2,776
Marin, CA (6041)	1,255

Source: EMSI Complete Employment - Spring 2009

Data Sources and Calculations

Occupation Data

Organizing regional employment information by occupation provides a workforce-oriented view of the regional economy. EMSI's occupation data are based on EMSI's industry data and regional staffing patterns taken from the Occupational Employment Statistics program (U.S. Bureau of Labor Statistics). Wage information is partially derived from the American Community Survey. The occupation-to-program (SOC-to-CIP) crosswalk is based on one from the U.S. Department of Education, with customizations by EMSI.

State Data Sources

This report uses state data from the following agencies: California Labor Market Information Department.